



33rd ERSA Summer School

REGIONS IN TRANSITION, WHAT IMPLICATIONS FOR TOURISM AND MANUFACTURING?

15 - 17 June, 2020 | Online event

ERSA in collaboration with RSAI and the Institute of Geography and Sustainability
(University of Lausanne, Switzerland)

ERSA summer school

■ OBJECTIVES

The ERSA Summer School 2020 in collaboration with the Institute of Geography and Sustainability (University of Lausanne) aim to gather young researchers (PhD and post-doctoral students) with direct training in regional science.

The Summer School seeks to encourage close interactions and feedbacks among participants and top senior researchers as well as internationally recognized analysts.

■ TOPIC

This year ERSA Summer School's edition will feature: **"Regions in transition, what implications for tourism and manufacturing?"**. Sustainability transition is a new significant challenge for regional science with several issues, needs, opportunities but also threats for regions specialized in tourism or/and manufacturing. Production, innovation and consumption systems, labour markets, transport and mobility are just few examples of elements that are evolving face to this challenge. Therefore, the Summer School intends to focus on the most relevant concepts as well as analytical models and frameworks to be able to understand implications of transition for tourism and manufacturing.

Within this umbrella, the ERSA Summer School 2020 will particularly address the interaction between empirical, theoretical and policy analysis related to the following classic topics of regional science:

- Regional and urban development, labour markets, policy and governance;
- Regional competitiveness, innovation and productivity;
- Change in location of economic activity;
- Segregation, social, environmental and spatial inequalities;
- Transport, land use and accessibility; Population, migration and mobility behaviour;
- Regional finance, fiscal issues, investment or capital markets.

■ LECTURES

Lectures cover a large variety of issues regarding to recent advances in theory and applications in regional science especially in the particular umbrella theme of the School.

They will be structured into three categories:

- ▶ **The "ERSA Prize 2019 Lecture" will be given by Philip McCann.** The lecture will be followed at the end of the afternoon by a Master class given in a relaxed atmosphere where he will talk about his research itinerary.
- ▶ **"Hot topic Lectures"** will be conducted by confirmed senior scholars with high reputation on the topic of the Summer School: issues regarding sustainability in tourism and manufacturing.
- ▶ **"Regional Science fundamentals Lectures"** will address classical themes of regional science.

■ PARTNERS

ERSA

The **European Regional Science Association (ERSA)** is the supranational grouping of regional science associations across Europe. The main functions of ERSA, apart from promoting the field of regional science, are to organize an Annual European Congress, an annual Summer and/or Winter Schools, the EPAINOS prize for young scientists and the ERSA Prize in Regional Science to recognize outstanding regional scientists. Its mission and objectives are to enhance regional science across Europe, stimulate research and the implementation of solutions, support young scientists with added-value programs, provide members with state-of-the-art knowledge, foster valuable exchanges at an international level, and move forward professional research developments through projects.

<http://ersa.org>

RSAI

The **Regional Science Association International (RSAI)** : The Regional Science Association International serves as an umbrella organization overseeing four major superregional organizations in Europe, North America, South America and the Pacific. The main objectives of the Association are the fostering of exchange of ideas and the promotion of studies focusing on the region, including the utilization of tools, methods and theoretical frameworks, specifically designed for regional analysis as well as concept, procedures and analytical techniques of the various social and other sciences. These objectives are supported through the acquaintance and discussion among its members and with scholars in related fields by the encouragement of publication of scholarly studies and by performing services to aid the advancement of its members and the field of regional science.

<http://www.regionalscience.org/>

UNIL , FGSE / IGD

The mission of the **Faculty of Geosciences and Environment (FGSE)** of the University of Lausanne (Switzerland) is to advance research, to teach and to ensure academic training in the geosciences and environmental sciences. Benefiting from a vibrant environment, the Faculty strives to move existing boundaries between the natural, human and social sciences. The disciplines of the geosciences and the environment are developing at the frontiers of the exact, experimental and social sciences; they are, fundamentally, interdisciplinary and, for some of them, transdisciplinary. Within these disciplines, the Faculty is interested in the co-evolution of people with their environment, at scales ranging from the nano- to the planetary, with a particular focus on Alpine environments and urban metropolis.

Composed of about 100 members, the **Institute of Geography and Sustainability (IGD)** is an interdisciplinary research institute that combines competences of various fields of human and social sciences (geography, economy, philosophy, anthropology, political sciences), cartography and statistics, as well as physical geography. The focus is on research on sustainability with six priority objectives embodied in six different research groups : Cultures and natures of tourism ; Development, societies, environments ; Environmental humanities ; Geographical information sciences (SciG) ; Urban studies; Water and geoheritage.

<https://www.unil.ch/igd/home/menuinst/institut/english.html>

The research group **Cultures and natures of tourism** carries out research on the multiple dimensions of tourism in human societies, both as object of research as such and as a means for the observation of various social phenomena. Tourism is not only a research object that can be isolated in order to be analysed. It also reveals multiple societal phenomena such as individual and collective identity, urbanity imagination, bio-physical resources, politics, economics, mobility, etc. The tourist gazes on these different social realities and the way in which tourists are mobilizing them in their practices are essential to understand the changing cultures and natures of tourism over time. <https://www.unil.ch/igd/CNT/en>

■ PROGRAMME OVERVIEW

ERSA 2020 Virtual Summer School			
	Monday, 15 June	Tuesday, 16 June	Wednesday, 17 June
9h00-9h30		Welcome	Welcome
9h30-10h30	Registration and Welcome	<i>Hot topic Lecture</i> Michael Hall	<i>Hot topic Lecture</i> Bernhard Truffer
10h30-10h45	Break		
10h45-12h15	Official opening	<i>Young Researchers' Session 2</i> Discussion: Michael Hall	<i>Young Researchers' Session 4</i> Discussion: Bernhard Truffer
12h15-13h30	Lunch		
13h30-14h30	<i>The ERSA Prize 2019 Lecture</i> Philip McCann	<i>Hot topic Lecture</i> Marie Delaplace	<i>Regional Science fundaments</i> Céline Rozenblat
14h30-14h45	Break		
14h45-16h15	<i>Young Researchers' Session 1</i> Discussion: Philip McCann	<i>Young Researchers' Session 3</i> Discussion: Marie Delaplace and Alessandra Faggian	<i>Young Researchers' Session 5</i> Discussion: Céline Rozenblat and Olivier Crevoisier
16h15-16h30	Break		
16h30-17h30	<i>Master Class</i> Philip McCann	<i>Hot topic Lecture</i> Alessandra Faggian	<i>Regional Science fundaments</i> Olivier Crevoisier
17h30-18h30			Closing Session

■ PARTICIPANTS PROFILE

The ERSA Summer School targets PhD students and junior with less than 10 years of research experience. The selection aims for a student body with high academic quality as well as a balanced representation of backgrounds.

■ WORKING LANGUAGE

All sessions will be conducted in English.

■ LOCAL ORGANIZING COMMITTEE

Leïla Kebir, University of Lausanne (leila.kebir@unil.ch)

Léa Canevet, University of Lausanne (lea.canevet@unil.ch)

Marjolaine Gros-Balthazard, University of Lausanne (marjolaine.gros-balthazard@unil.ch)

Diane Laugel, University of Lausanne (diane.laugel@unil.ch)

monday, 15 june

09:30 - 10:30 | Registration and Welcoming

10:30 - 10:45 | Break

10:45 - 12:15 | Official Opening

Official local welcome

Frédéric Herman, Dean of Faculty of Geosciences and Environment,
University of Lausanne, Switzerland

Céline Rozenblat, Director of Institute of Geography and Sustainability,
University of Lausanne, Switzerland

Welcome words from ERSA President

André Torre, *INRAE-Agroparistech, University Paris-Saclay, France*

Presentation of the local research group on tourism and organization of the three days

Leïla Kebir, *University of Lausanne, Switzerland*

12:15 - 13:30 | Lunch

13:30 - 14:30 | The ERSA Prize 2019 Lecture

Philip McCann, *University of Sheffield, UK*

Coronavirus, Economic Shocks and the Geography of Discontent

14:30 - 14:45 | Break

14:45 - 16:15 | Young Researchers' Session 1 (discussion: Ph. McCann)

Chiara Ferrante, *Sapienza University of Rome, Italy*

Drivers of protest voting in Europe

Luise Koeppen, *University of Groningen, The Netherlands*

A multi-level modelling approach to the analysis of the effects of happiness, the geography of discontent and place identities on voting behaviour

José Morales, *University of Murcia, Spain*

Perpetuating regional asymmetries through income transfers

16:15 - 16:30 | Break

16:30 - 17:30 | Master Class

Philip McCann, *University of Sheffield, UK*

Tuesday, 16 June

09:00 - 09:30 | Welcome

09:30 - 10:30 | Hot topic Lecture

Michael Hall, *University of Canterbury, New-Zealand*

Regions and tourism in transition? Tourism and sustainability in a COVID-19 world

10:30 - 10:45 | Break

10:45 - 12:15 | Young Researchers' Session 2 (discussion: M. Hall)

Stefania Toso, *University of Milan-Bicocca, Italy*

Second home landscapes in rural Italy / spatial and social practices

Nima Zahir, *Paris 8 University, France and Isfahan University, Iran*

Iranian tourism construction process in context of crises. Challenges, sustainable development and heritage: the case of the Golden Triangle

Bogdan-Constantin Ibanescu, *University of Iasi, Romania*

Testing the relation between tourism, economic resilience, and shock resistance

12:15 - 13:30 | Lunch

13:30 - 14:30 | Hot topic Lecture

Marie Delaplace, *Gustave Eiffel University, France*

Tourism and inhabitants: between conflicts and complementarities

14:30 - 14:45 | Break

14:45 - 16:15 | Young Researchers' Session 3 (discussion: M. Delaplace; A. Faggian)

Fuensanta Arnaldos, *University of Murcia, Spain*

Spatio-temporal distribution of international tourism in the European Union: a system dynamics approach

Wadie Othmani, *University of Angers, France and University of Sousse, Tunisia*

Towards the construction and enhancement of a touristic-culinary resource in the Tunisian area of influence

Susana Herrero Ballesta, *University of Murcia, Spain*

Sharing economy for 41 European touristic cities.

16:15 - 16:30 | Break

16:30 - 17:30 | Hot topic Lecture

Alessandra Faggian, *Gran Sasso Science Institute, Italy*

Resilience and Inner Areas

wednesday, 17 june

09:00 - 09:30 | Welcome

09:30 - 10:30 | Hot topic Lecture

Bernhard Truffer, *Utrecht University, The Netherlands and Eawag, Switzerland*

The contribution of regions to sustainability transitions: insights from a Geography of Transitions perspective

10:30 - 10:45 | Break

10:45 - 12:15 | Young Researchers' Session 4 (discussion: B. Truffer)

Wenjing Kuai, *University of Birmingham, UK*

Do eco-innovators hire more green workers? Firm level evidence from the Netherlands

Aysun Aygün, *Information Technology University, Turkey*

Towards climate change responsive tourism development in Turkey

Mario Intini, *University of Bari «Aldo Moro», Italy*

The airport's harmful effects on the environment and cancer patients: evidence from a case study

12:15 - 13:30 | Lunch

13:30 - 14:30 | Regional Science fundamentals

Céline Rozenblat, *University of Lausanne, Switzerland*

A multi-level network perspective on resilience of complex urban systems in transition

14:30 - 14:45 | Break

14:45 - 16:15 | Young Researchers' Session 5 (discussion: C. Rozenblat, O. Crevoisier)

Moises Lenyn Obaco Alvarez, *University of Cuenca, Ecuador*

Subnational poverty dynamics of two «forgotten» Latin American Countries: the cases of Ecuador and Uruguay

Elena Semerikova, *Higher School of Economics, Russia*

Determinants of Real Estate Prices: A Spatial Panel Study of German Regions

Janis Balodis, *University of Kyiv, Ukraine*

Ethnic Diversity and Real Estate Market Dynamics: the case of Riga, Latvia

16:15 - 16:30 | Break

16:30 - 17:30 | Regional Science fundamentals

Olivier Crevoisier, *University of Neuchâtel, Switzerland*

Urban and regional development in tension: the role of anchoring milieus

17:30 - 18:30 | Closing Session

speakers (alphabetical order)



Olivier Crevoisier - *University of Neuchâtel, Switzerland*

Olivier Crevoisier is Professor at University of Neuchâtel (Switzerland). He has worked on innovation, on the knowledge economy and on the digital and ecological transition in the perspective of territorial development, developing the approach of innovative and anchoring milieus. His main research question is how regional and local economic players find their place in a world of hyper-mobility of goods, knowledge, capital and consumers. At a more theoretical level, he develops an approach of the territorial economy as a political economy taking space into account.



Alessandra Faggian - *Gran Sasso Science Institute, Italy*

Alessandra Faggian is Professor of Applied Economics, Director of Social Sciences and Vice Provost for Research at the Gran Sasso Science Institute, L'Aquila, Italy. She is co-editor Journal of Regional Science and previous co-editor of Papers in Regional Science. She has been President of the North American Regional Science Council (NARSC). Dr Faggian's research interests lie in the fields of regional and urban economics, demography, labour economics and economics of education.



Marie Delaplace - *Gustave Eiffel University, France*

Marie Delaplace is Professor at Gustave Eiffel University (EUP, Lab'urba). She has published 60 papers in academic journals, on high-speed rail, tourism and mega-event. She has co-founded the Observatory for Research on Mega-events (ORME). She co-manages the Research Group City, Tourism, Transport and Territory. She is member of the executive board of ASRDLF.



Micheal Hall - *University of Canterbury, New Zealand*

Michael Hall is currently a Professor in marketing and tourism at the University of Canterbury, New Zealand, Docent in Geography, University of Oulu, Finland, and a Visiting Professor at Lund and Linnaeus universities in Sweden. He is the author or editor of over 90 books and over 300 journal articles. He has published widely on tourism and mobilities, regional development, global environmental change and sustainability.



Philip McCann - *University of Sheffield, UK*

Winner: ERSA Prize in Regional Science 2019

Philip McCann is Professor of Urban and Regional Economics at the University of Sheffield UK. He is one of the world's most highly cited spatial economists and economic geographers and has won various academic awards for his research in different parts of the world. He was previously Special Adviser to the EU Regional Policy Commissioners Johannes Hahn (2010-2013) and Corina Cretu (2015-2016) and Chief Independent Economic Advisor on the Sixth Cohesion Report (2014).



Bernhard Truffer - *Utrecht University, the Netherlands and Eawag, Switzerland*

Bernhard Truffer is professor at Utrecht University in the Netherlands and head of the Environmental Social Science department at Eawag in Dübendorf, Switzerland. An economic geographer by training, he worked over the last three decades on sustainability transitions, emphasizing the role of places and scales in key basic service sectors such as energy, transport or urban water. His research took place in Europe, China, East and South Africa and Australia.



Céline Rozenblat - *University of Lausanne, Switzerland*

Céline Rozenblat is professor of Urban Geography at the University of Lausanne, Switzerland and president of the urban commission of the International Geographical Union (IGU). She studies systems of cities at European and world scales, multinational firm networks, inter-urban dynamics, comparative urban data, mapping and visualization of networks in geography, and spatial analysis. To study these topics comparatively, she has built many databases on large European and worldwide cities and the networks they form.

Young researchers (alphabetical order)



Fuensanta Arnaldos

After a Bachelor's degree in Economics (University of Murcia, Spain) and MSc in Operational Research (London School of Economics and Political Science, UK), Fuensanta Arnaldos is lecturer in the Department of Quantitative Methods for the Economy at the University of Murcia, teaching Statistics in the Faculty of Economics and Business. Her research interests include quantitative analysis of tourism, tourism demand modelling and innovation in teaching methodologies.



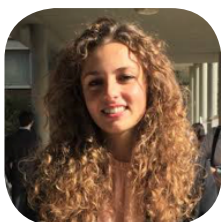
Aysun Aygün

Aysun Aygün was graduated from Middle East Technical University (Turkey), Department of City and Regional Planning in 2011, had M.Sc. from Information Technology University (Turkey) City Planning Program in 2015, studied "Urban Resilience to Climate Change in Istanbul." She is a Research Assistant in Pamukkale University and PhD candidate at Information Technology University. Her PhD project is on "Socio-economic Impacts of Climate Change on Tourism in Turkey".



Janis Balodis

Janis Balodis holds a Masters degree in Local Comparative Development from the University of Trento, Italy, and a Bachelor degree in Geography at the University of Latvia. He has a professional experience working at the Unit of Regional Economics, Ministry of Environmental Protection and Regional Development of Latvia and the Unit of Land Use, Ministry of Agriculture of Latvia.



Chiara Ferrante

Chiara Ferrante is 27 PhD student in Economic Geography, planning to finish in March 2021, at Sapienza University of Rome (Italy). Her background is in Economics and econometric techniques. Her PhD thesis is dealing with electoral geography and the socio-economic drivers of the voting behaviour in different spatial contexts.



Susana Herrero Ballesta

Susana Herrero Ballesta is completing her PhD in the Department of Quantitative Methods of Economics at the University of Murcia (Spain). The objective of her paper is to determine the variables that affect the probability of an accommodation of being really a shared host or a traditional renting host in 41 European cities.



Bogdan-Constantin Ibanescu (Twitter: @bogdan_ibanescu)

Bogdan-Constantin Ibanescu is a researcher at the Centre for European Studies of Alexandru Ioan Cuza University of Iasi (Romania). Since 2012 Bogdan holds a PhD diploma in Human Geography from Bordeaux Montaigne University (France). His PhD thesis analysed the tourism planning conditions of the Moldavian peripheral rural space.



Mario Intini

Mario Intini is a postdoctoral research fellow in Applied Economics at the Department of Economics, Management and Business Law, University of Bari «Aldo Moro», Italy. He is a Honorary Research Fellow at the Department of Economics, University of Warwick, UK (2019-2022). He is Temporary Lecturer of Industrial Economics at the Department of Economics, Management and Business Law (from 2019).



Luise Koeppen

Luise Koeppen is a second year PhD student at the University of Groningen (Netherlands), Faculty of Spatial Sciences, Department of Economic Geography. Her PhD research is on regional and socio-economic differences and how this affects voting behaviour (EU).



Wenjing Kuai (Twitter: @KuaiWenjing)

Wenjing Kuai is third year PhD student in the Department of Economics, University of Birmingham (UK). She is from China. Her research interests lie in the area of economics of environment and innovation, focusing on green economy transition and its effect on labor markets.



José R. Morales

José R. Morales is an Associate Professor at the University of Murcia. José has completed his Ph.D. on Economics at the University of Murcia in September 2019. His main research interests are: economic geography models, offshoring, fiscal policy, and natural resources.



Moises Lenyn Obaco Alvarez

www.facebook.com/moiseslenyn.obacoalvarez

Moises Lenyn Obaco Alvarez is an economist graduated by University of Guayaquil (Ecuador), with a Master degree and PhD degree from the University of Barcelona (Spain). His research field is applied regional science. Currently, he is working for the University of Cuenca (Ecuador).



Wadie Othmani (Instagram: Wadie Othmani)

Wadie Othmani is a doctor in tourism geography from the University of Angers (France) and doctor in territory planning from the University of Sousse (Tunisia). His lines of research focus on access to tourism of emerging society and on the tourism development of culture and heritage in a context of Maghreb.



Elena Semerikova

Elena Semerikova received her bachelor's degree in economics in 2011 at NRU Higher School of Economics (Russia). She participated in the double degree program between HSE and Humboldt University in Berlin (Germany) as a master student. After finishing her PhD at HSE in 2017 in Economics she became a senior lecturer at NRU HSE.



Stefania Toso (Twitter : @ArchitettaSte / www.facebook.com/architettaste / www.linkedin.com/in/stefaniatoso/ / Instagram : architettaste)

Architect with work experience in Turin, Milan and Vienna, Stefania Toso is a PhD student at the University of Milan-Bicocca (Italy). Her research deals with rural areas and second home tourism. She is specialised in hillscape heritage and ecomuseums. Passionate about everything visual and founding member of Ecomuseum Terre Astigiane.



Nima Zahir (www.linkedin.com/in/nima-zahir-3341271a7/)

Nima Zahir is a PhD student in Geography at Paris 8 University (France) and Isfahan University (Iran). His thesis research focus on sustainable tourism in the central region of Iran, called the Golden Triangle.

PRACTICAL INFORMATION

The online event will be held on Zoom. The access codes/link to the Summer school is the same during the three days:

- **Computer:** <https://unil.zoom.us/j/99902411437>
- **Smartphone:** via application "ZOOM Cloud Meetings", meeting number: 999 0241 1437.
- **Phone:** call the number associated to your country (see here under), meeting number: 999 0241 1437.

The platform will be open from 9:30 on Monday and from 9:00 on Tuesday and Wednesday. **Please connect yourself at least 20mn before the beginning so we make sure to start on time.**

If you have any technical problem contact Léa Canevet:
lea.canevet@unil.ch / Skype: lea.canevet

IF YOU NEED TO REACH US

Leïla Kebir: leila.kebir@unil.ch

Marjolaine Gros-Balthazard: marjolaine.gros-balthazard@unil.ch

ERSA Office, Tel: + 32 10 47 43 62

Mobile / WhatsApp: During the summer school you can reach us on:
+41 78 778 42 30 ; +33 6 86 23 02 59

ZOOM PHONE ACCESS

Belgium: +32 2 788 0172 or +32 2 788 0173 or +32 1579 5132 or +32 2 290 9360
or +32 2 588 4188

Spain: +34 917 873 431 or +34 84 368 5025 or +34 91 787 0058

Russian Federation: +7 812 426 8988 or +7 495 283 9788

France: +33 1 7095 0350 or +33 7 5678 4048 or +33 1 7037 2246 or +33 1 7037 9729
or +33 1 7095 0103

Italy: +39 069 480 6488 or +39 020 066 7245 or +39 021 241 28 823

The Netherlands: +31 20 794 6520 or +31 20 794 7345 or +31 20 241 0288 or +31 20 794
0854 or +31 20 794 6519

UK: +44 330 088 5830 or +44 131 460 1196 or +44 203 481 5237 or +44 203 481 5240
or +44 208 080 6591 or +44 208 080 6592

Romania: +40 37 170 0418 or +40 31 630 1088

Switzerland: +41 43 210 70 42 or +41 43 210 71 08 or +41 22 591 00 05 or +41 22 591 01 56
or +41 31 528 09 88

Turkey : +90 216 900 2606 or +90 216 900 1866

JOIN US ON SOCIAL MEDIA

Promote your participation, be active with us on social media!

Twitter: @ERSA_Org @FGSE_UNIL

Hashtag #ersasummerschool #igdsion



INSTITUTE OF GEOGRAPHY AND SUSTAINABILITY

University of Lausanne | Sion Campus | CH - 1967 Bramois

Phone +41 (0)27 205 73 22 | www.unil.ch/igd